

# JOHN LOUIS HOME

Solid Wood Home Storage Solutions



Installation Instructions

## **4ft. & 6ft. Metal Garment Bar Kit**

JLH-551, JLH-552

## PARTS LIST:

Note - Installation instructions are compatible with both 4ft. and 6ft. models.



Quantity: 1  
72 in. or 48 in. Metal Bar



Quantity: 2  
Bar End Hardware



Quantity: 2  
J-Hook Hardware



Quantity: 4  
#8 1 in. screw



Quantity: 2  
#6 1 1/4 Self Tapping screw

## Required Tools For Installation:

The following tools will be needed to assemble and install your John Louis Home Metal Garment Bar Kit:

- Phillips Screwdriver
- Powered Drill with Phillips Bit

## Contact Us:

For questions concerning missing or damaged parts, technical specs and / or assembly help, please contact John Louis Home Customer Service at:

Email: [service@johnlouishome.com](mailto:service@johnlouishome.com)

Web: [www.johnlouishome.com](http://www.johnlouishome.com)

Phone: 1.800.480.6985 (Mon-Fri, 8am-4pm, Central)

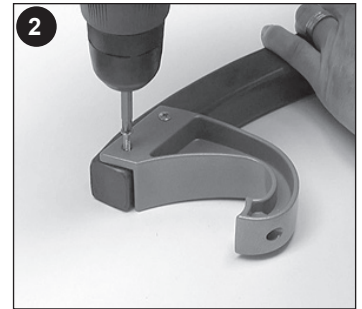
## STEP 1: Attaching J-Hook To Angle Bracket

**IMPORTANT!** Angle Brackets (not included) are required for installation.

If your shelf is already in place, remove angle brackets and proceed with following steps.

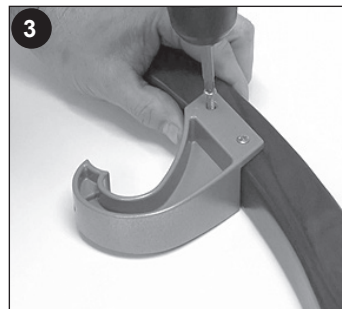
### 12 IN. ANGLE BRACKET / J-HOOK ATTACHMENT

1. Align J-hook flush with front of the angle bracket.
2. Secure J-hook using #8 1 in. screws (manual screwdriver or low speed drill recommended).
3. Repeat for remaining angle bracket.



### 16 IN. ANGLE BRACKET / J-HOOK ATTACHMENT

1. Measure 3 in. back from front of angle bracket & mark location.
2. Place J-hook snug with underside of bracket & align the front edge of the J-hook with the mark.
3. Secure J-hook using #8 1 in. screws (manual screwdriver or low speed drill recommended).
4. Repeat for remaining angle bracket.



## STEP 2: Attaching Angle Bracket to Wall & Shelf

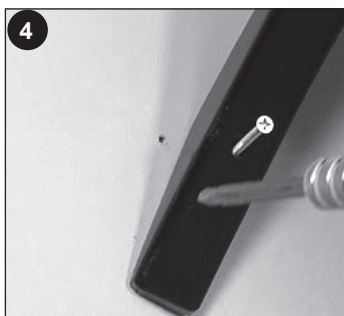
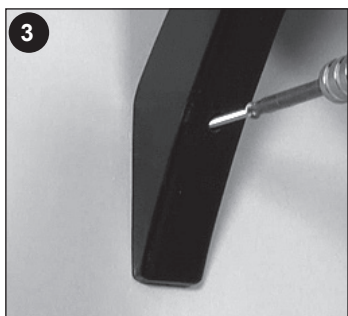
If your shelf was already in place, replace angle bracket at prior location. For new bracket installation proceed with following steps.

1. Count over the number of slats for desired angle bracket position.
2. Place angle bracket into position directly underneath shelf slat.

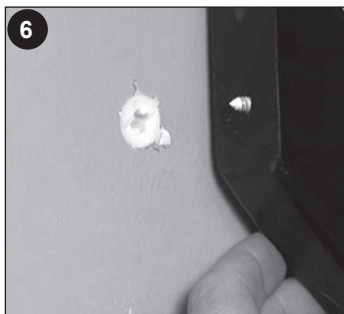
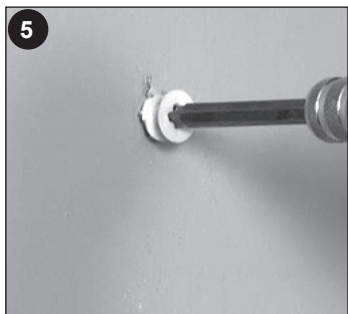
Ensure that the angle bracket is flush with the back wall and the underside of the front shelf rail.



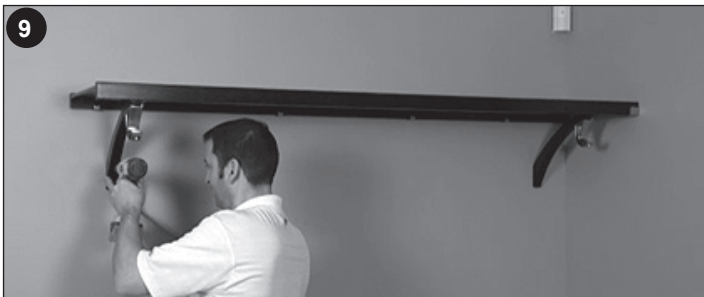
3. Insert #8 3 in. screw into angle bracket & screw part way into wall to mark bracket location.
4. Unscrew & remove bracket.



5. Use wall anchor at mark if no stud is present.
6. Insert the screw tip into the anchor & rotate angle bracket into position.



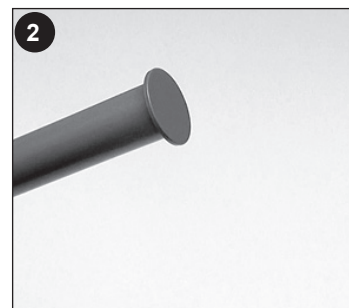
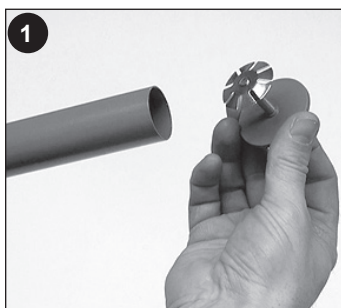
7. Secure bracket using #8 3 in. screw.
8. Insert mushroom cap into angle bracket screw hole.
9. Repeat for remaining angle bracket.



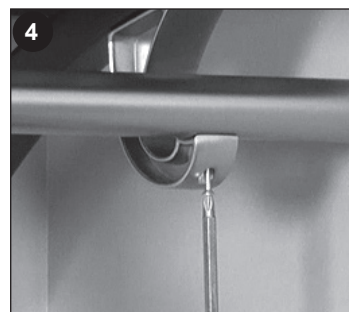
## STEP 2: Attaching Garment Bar

Measure required distance & cut garment bar if necessary.

1. Insert the bar end into the end of the garment bar.
2. Turn clockwise to tighten & repeat for opposite bar end.



3. Place the garment bar onto the J-hooks.
4. Secure the bar to the J-hooks using #6 1 1/4 in. self tapping screws.



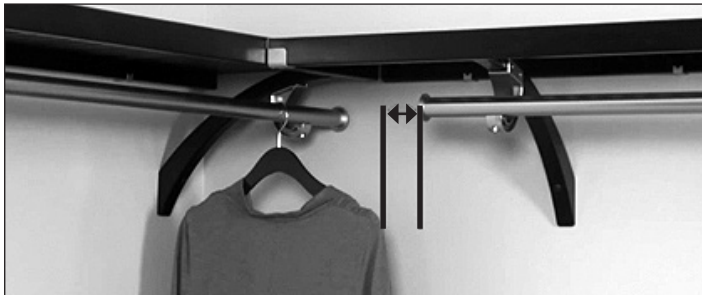


## Installing Perpendicular / Corner Garment Bars

---

Follow metal garment bar installation process for 1st shelf.

1. Place a hanging item on the installed garment bar.
2. Use the edge of the garment to determine the end of the 2nd garment bar.
3. Allow for space between the end of the 2nd garment bar & clothing.
4. Install 2nd garment bar following metal garment bar installation process.



# JOHN LOUIS HOME

Solid Wood Home Storage Solutions

---

For additional product information including step-by-step Installation Videos, Frequently Asked Questions, Storage Tips and more, please visit: [johnlouishome.com/resources](http://johnlouishome.com/resources)