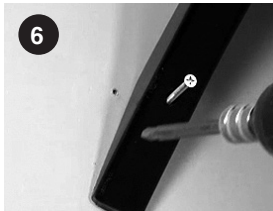
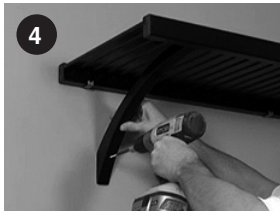
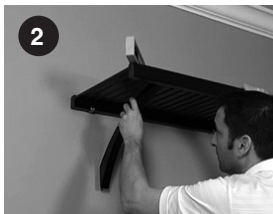


STEP 2: For Free-Hanging Shelf (No Sidewall Attachment)

1. Place shelf onto L-clip hardware & place a level onto shelf.
2. Place angle bracket under shelf flush with wall & under-side of front rail.
3. Level shelf front to back.
4. Insert #8 3in. screw into angle bracket.
5. Screw part way into wall to mark bracket location
6. Unscrew & remove angle bracket.
7. Proceed with Steps 5 - 9 from Step 1 option



JOHN LOUIS HOME

Solid Wood Home Storage Solutions

Installation Instructions Angle Bracket

JLH-516, 516W, 517, 519, 519W, 520,
590CH, 591, 592CH, 593

PARTS LIST:



Quantity: 2
Angle Bracket



Quantity: 2
#8 3in. Screw



Quantity: 2
Mushroom Cap

CONTACT US:

For questions concerning missing or damaged parts, technical specs and / or assembly help, please contact John Louis Home Customer Service at:

service@johnlouishome.com 1.800.480.6985 (M-F 8am-4pm CST)

STEP 1:

1. Count over the number of slats for desired angle bracket position and place angle bracket into position

Ensure that the angle bracket is flush with the back wall and the underside of the front shelf rail.

2. Insert #8 3 in. screw into angle bracket.
3. Screw part way into wall to mark bracket location
4. Unscrew & remove bracket.
5. Use wall anchor at mark if no stud is present.
6. Insert the screw tip into the anchor & rotate angle bracket into position.
7. Secure bracket using #8 3 in. screw.
8. Insert mushroom cap into angle bracket screw hole
9. Repeat for remaining angle bracket.

