

JOHN LOUIS HOME

Solid Wood Home Storage Solutions

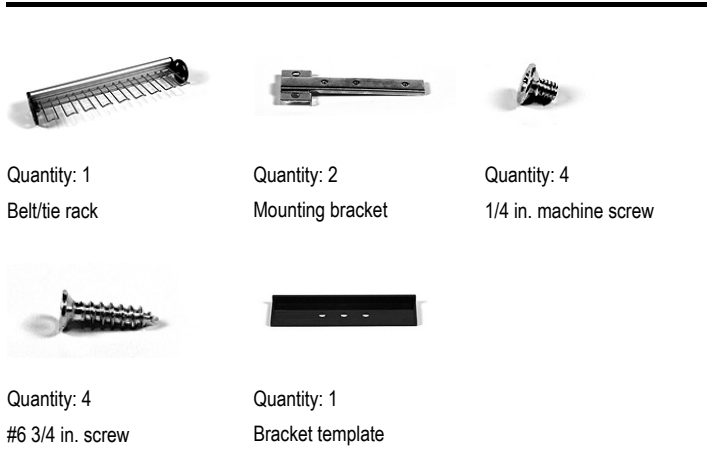


Installation Instructions

12in. & 16in. Side Mount Belt & Tie Rack

JLH-742, 743

PARTS LIST:



Required Tools For Installation:

The following tools will be needed to assemble and install your John Louis Home product:

- Pencil
- Phillips Screwdriver
- Powered Drill with Phillips Bit (optional)

Contact Us:

For questions concerning missing or damaged parts, technical specs and / or assembly help, please contact John Louis Home Customer Service at:

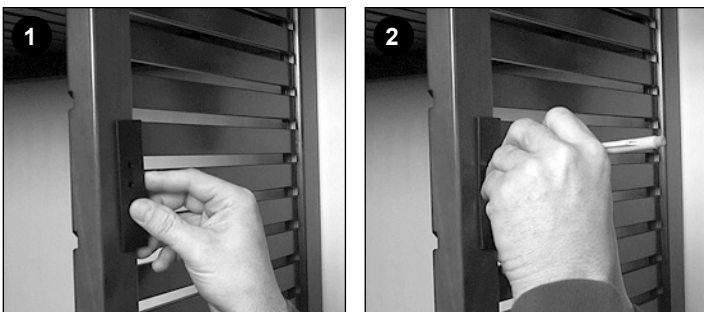
Email: service@johnlouishome.com

Web: www.johnlouishome.com

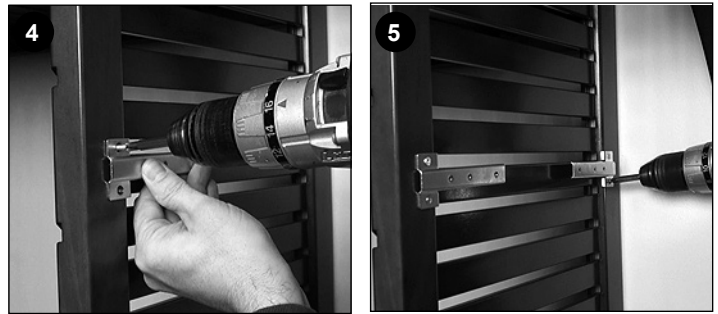
Phone: 1.800.480.6985 (Mon-Fri, 8am-4pm, Central)

STEP 1: Attach Brackets To Tower

1. Position the template provided on the tower rail at the desired location.
2. Mark the position with any of the holes provided.
3. Repeat for the opposite tower rail.

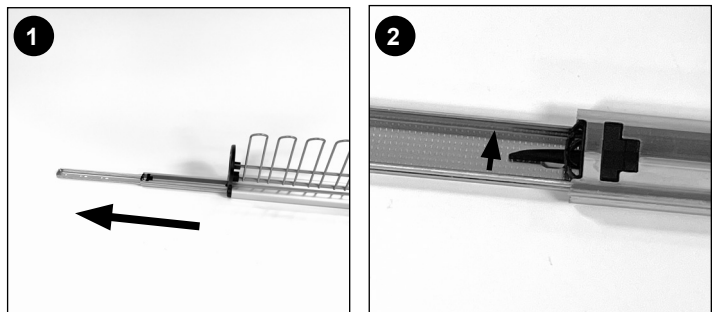


4. Position the top glide bracket hole at mark & secure the bracket with #6 3/4 in. screws.
5. Repeat for 2nd bracket on opposite tower rail.

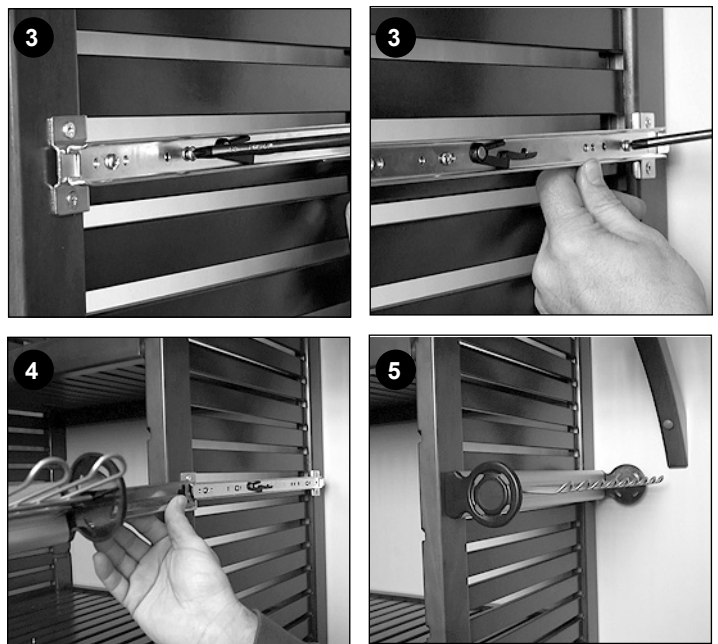


STEP 2: Attach Belt/Tie Rack

1. Fully extend glide from belt/tie rack.
2. Move lever up & separate glide back.

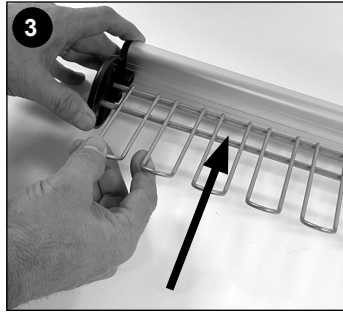
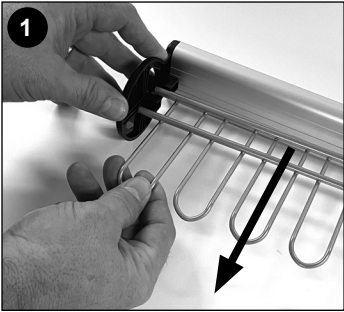


3. Position glide back with the open face outward & secure to brackets using 1/4 in. screws.
4. Attach belt/tie rack to glide back.
5. Move rack in & out to lock glide.



STEP 3: How To Change Rack Position

1. Pull rack outward from plastic frame.
2. Lift out from frame.
3. Flip rack position.
4. Place rack into plastic frame & push rack until snap lock into frame.



JOHN LOUIS HOME

— ◆ —
Solid Wood Home Storage Solutions

For additional product information including step-by-step Installation Videos, Frequently Asked Questions, Storage Tips and more, please visit: johnlouishome.com/resources