

JOHN LOUIS HOME

Solid Wood Home Storage Solutions



Installation Instructions

Tower Door Kit

JLH-534, 534S, 534W, 534WS, 535, 535S, 602CH, 602CHS, 603, 603S

PARTS LIST:

Note - Installation instructions are compatible with Glass, Solid, and Shaker models.



Quantity: 2
Glass Door

or



Quantity: 2
Solid Wood Door

or



Quantity: 2
Solid Shaker Door



Quantity: 4
Soft Close Door Hinge



Quantity: 4
Hinge Cover A



Quantity: 4
Hinge Cover B



Quantity: 2
Door Handle



Quantity: 2
Door Handle Machine screw



Quantity: 24
#6 1/2 in. screw



Quantity: 4
Door Bumper

Required Tools For Installation:

The following tools will be needed to assemble and install your John Louis Home Tower Doors:

- Pencil
- Phillips Screwdriver
- Powered Drill with Phillips Bit (optional)

Contact Us:

For questions concerning missing or damaged parts, technical specs and / or assembly help, please contact John Louis Home Customer Service at:

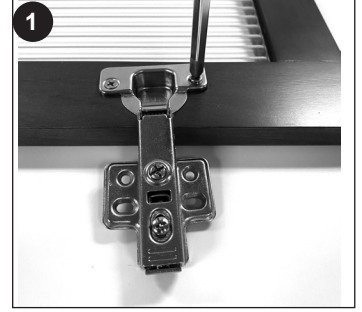
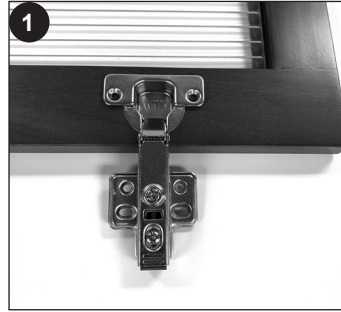
Email: service@johnlouishome.com

Web: www.johnlouishome.com

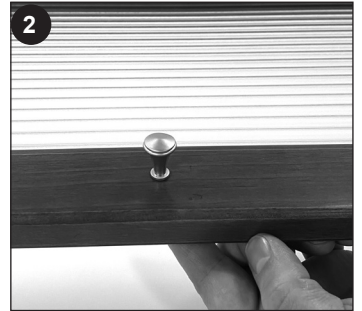
Phone: 1.800.480.6985 (Mon-Fri, 8am-4pm, Central)

STEP 1: Installing Doors

1. Attach hinge to doors using #6 1/2 in. screws.



2. Attach handles to doors using 1 1/2 in. machine screw



3. Position the door at tower to determine shelf placement for the bottom of the door.
4. Align door into position & flush door with top of tower.

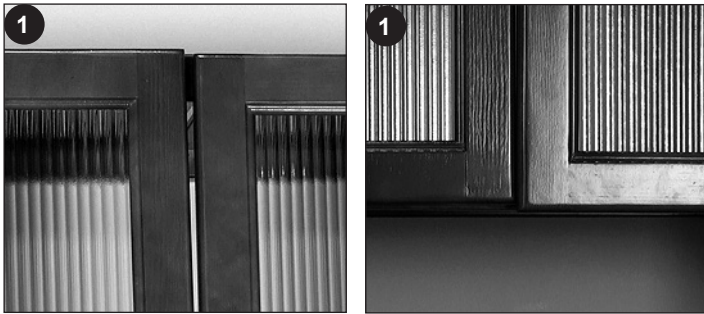


5. With door in closed position, mark the top oval hole location.
6. Secure with 1/2 in. screw.
7. Repeat for 2nd hinge & 2nd door.

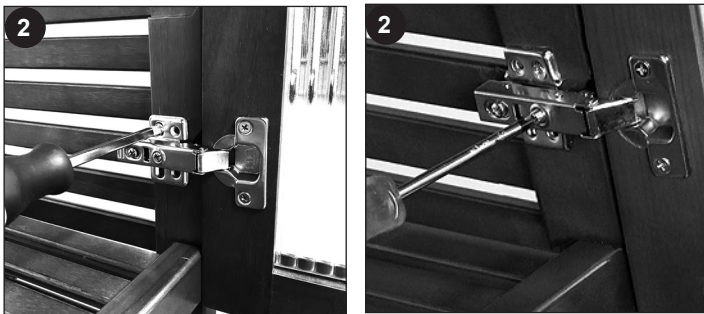


STEP 2: Adjusting Doors

1. Close doors to find areas needing adjustment (Uneven top - Too much or too little gap).



2. Door adjustment may take a combination of the following:
 - Loosen oval hole hinge screws to move doors up & down.
 - Use front hinge screw to move doors in & out.
 - Use back hinge screw to move door forward or back.
3. After adjusting doors, finish securing hinges to tower using 1/2 in. screws at the remaining hole locations.



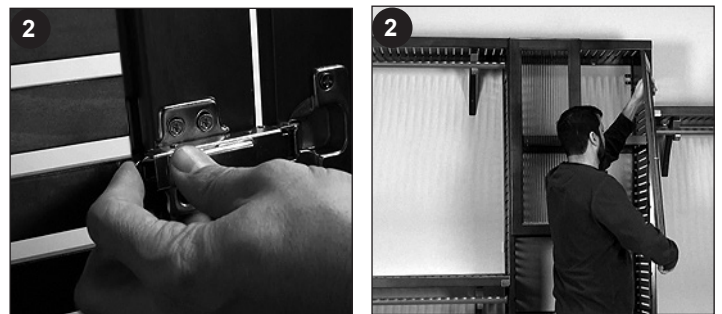
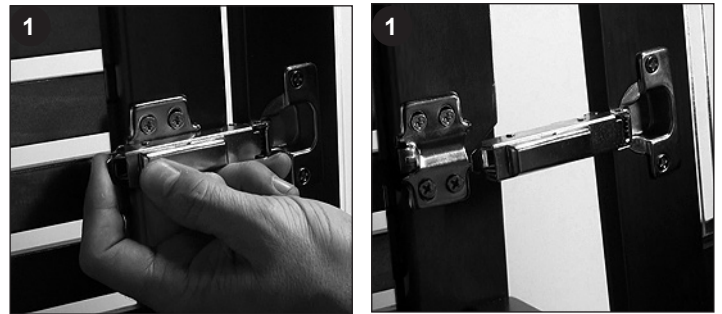
4. Snap screw covers onto hinges.
5. Place bumpers.



STEP 3: Quick Release Hinge

Remove doors by quick release to add or adjust shelves

1. Pull on back lever to remove hinge.
2. Snap back into place to secure hinge.



JOHN LOUIS HOME

Solid Wood Home Storage Solutions

For additional product information including step-by-step Installation Videos, Frequently Asked Questions, Storage Tips and more, please visit: johnlouishome.com/resources