

STEP 2: Securing Bar To J-Hook

1. Place garment bar onto J-hooks.
2. Secure garment bar to J-Hooks using #6 1/4 in. self tapping screws.
3. Repeat for all J-Hook locations.



JOHN LOUIS HOME

Solid Wood Home Storage Solutions

Installation Instructions J-Hook Hardware

JLH-505WC

PARTS LIST:



Quantity: 2
J-Hook



Quantity: 4
#8 1in. Screw



Quantity: 2
#6 1/4 Self Tapping Screw

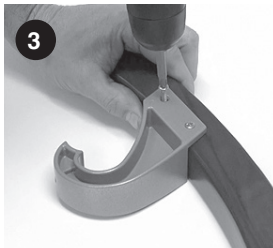
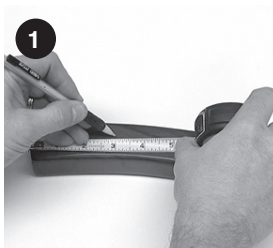
CONTACT US:

For questions concerning missing or damaged parts, technical specs and / or assembly help, please contact John Louis Home Customer Service at:

service@johnlouishome.com 1.800.480.6985 (M-F 8am-4pm CST)

STEP 1: For Use With 16in. Deep Angle Bracket

1. Measure 3 in. back from front of angle bracket & mark.
2. Place J-hook snug with underside of bracket & align the front edge of the J-hook with the mark.
3. Secure using #8 1 in. screws.
4. Repeat for each angle bracket & J-hook.



STEP 1: For Use With 12in. Deep Angle Bracket

1. Place J-hook snug with underside of bracket & flush the front edge of the J-hook with the front of the angle bracket.
2. Secure using #8 1 in. screws.
3. Repeat for each angle bracket & J-hook.

