

JOHN LOUIS HOME

Solid Wood Home Storage Solutions



Installation Instructions

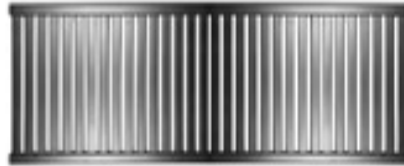
12in. Deep Simplicity Organizer

JLH-530, 531, 533

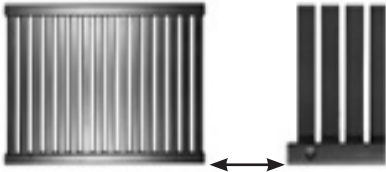
PARTS LIST:



Quantity: 2 72 in. Tower Side



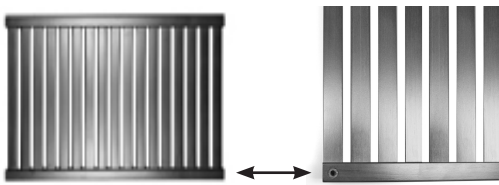
Quantity: 2 48 in. Shelf



Quantity: 1 24 in. Tower Bottom Cam Shelf with Nameplate



Quantity: 4 24 in. Adjustable Shelf



Quantity: 1 26.25 in. Tower Top Shelf



Quantity: 2 48 in. Wardrobe Bar



Quantity: 1 24 in. Wardrobe Bar



Quantity: 1
Tower Stabilizer Bar



Quantity: 8
Bar Spacer



Quantity: 6
Tower Bracket



Quantity: 6
Shelf End



Quantity: 14
Shelf mounting L- Clip



Quantity: 16
Adjustable Shelf Pin



Quantity: 4
Tower Mushroom Cap



Quantity: 48 Wall Anchor



Quantity: 44 #8 1 1/2 in.



Quantity: 18
#8 1 in. (Flat)

PARTS LIST CONTINUED:



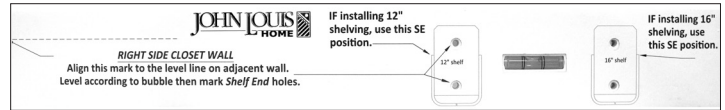
Quantity: 12
#8 3/4 in.



Quantity: 4
#8 1/2 in.



Quantity: 18
#4 3/4 in.



Quantity: 1
Shelf End Template



Quantity: 4
Cam Bolt



Quantity: 4
Cam Lock Nut



Quantity: 1
Touch Up Stain Pen



Quantity: 4
Barrel Bolt



Quantity: 4
Barrel Nut



Quantity: 1
Allen wrench

REQUIRED TOOLS FOR INSTALLATION:

The following tools will be needed to assemble and install your John Louis Home Solid Wood Closet Organizer:

- Pencil
- Tape Measure
- Level
- Stud Finder
- Phillips Screwdriver
- Powered Drill with Phillips Bit
- 1/8 in. Drill Bit
- 1/4 in. Drill Bit
- Saw*

*John Louis Home recommends using a powered table saw or chop saw with a fine tooth blade to cut the wood shelving down to your required measurements. To cut the metal garment bars, a hack saw or reciprocating saw with a fine tooth blade can be used.

CONTACT US:

For questions concerning missing or damaged parts, technical specs and / or assembly help, please contact John Louis Home Customer Service at:

Email: service@johnlouishome.com

Web: www.johnlouishome.com

Phone: 1.800.480.6985 (Mon-Fri, 8am-4pm, Central)

JOHN LOUIS HOME

Solid Wood Home Storage Solutions

IMPORTANT! - Read Through Instructions Before Assembly

Proper installation of the Simplicity Organizer requires attachment to the back wall **and** both side walls. If your design requires an open-ended shelf, additional angle bracket hardware will need to be purchased.

Assembly instructions are written for 8 ft. configuration A. Please see pages 12 & 13 for the 10 ft. & 6 ft. configurations. All assembly processes are the same for each configuration EXCEPT for the order or locations of the assembly process. Use selected configuration for shelf locations.

This Closet Organizer is a CUT-TO-FIT installation.

Shelf lengths and Garment bars may need to be cut depending upon configuration desired.

All cut shelf lengths are used in closet configurations supplied. Depending upon your closet dimensions, some cut lengths may not be usable.

EXAMPLE: If you choose an 8 ft. closet configuration and the width of your closet is 7 ft. 6 in., some shelf lengths may need to be cut 6 in. shorter in length to fit closet dimensions.

EXAMPLE: If you choose a 6 ft. closet configuration and the width of your closet is 6 ft. 4 in., the cut shelf length will be short 4 in. for use. It is recommended that if your closet is over the selected dimension (6 ft.), then choose a configuration from the next dimension higher (8 ft.).

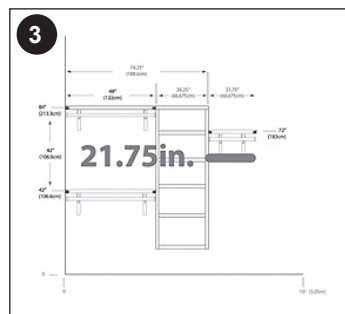
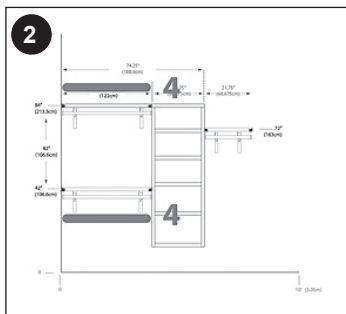
Chosen configuration may not require use of all hardware or components supplied. It is recommended to secure hardware into wall studs for overall strength and stability of closet system.

If choosing a custom designed configuration, modifications to the instructions provided will be necessary.

All configurations provided may be reversed.

STEP 1: Determine Your Dimensions

1. Locate your desired configuration (**Instructions are written for 8 ft. configuration A**).
2. Double hang is created with 2 - 4 ft. shelf length.
3. Long hang is created by cutting a 2 ft. adjustable shelf to 21.75in. wide. (Cut may be adjusted for any width under 2ft.)



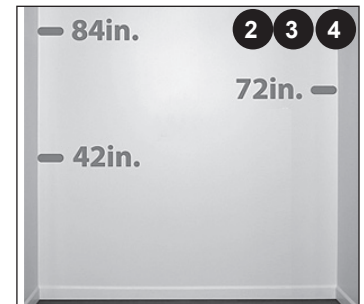
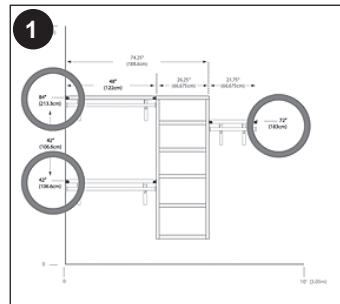
STEP 2: Marking Measurements On Wall

1. Locate the 3 main shelf height locations for your configuration.
2. Measure up from the floor & mark the 84 in. location.
3. Measure up from the floor & mark the 42 in. location.
4. Measure up from the floor & mark the 72in. location.

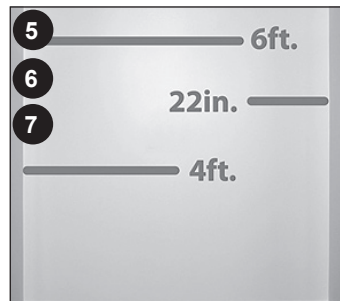
84 in. - top shelf

42 in. - lower hang shelf

72 in. - long hang shelf



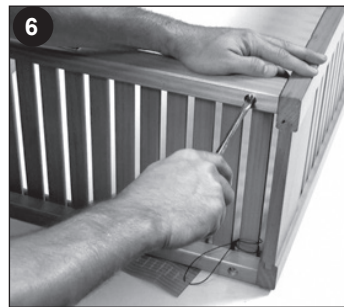
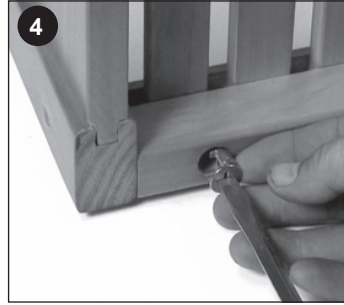
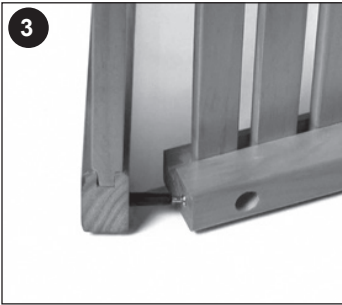
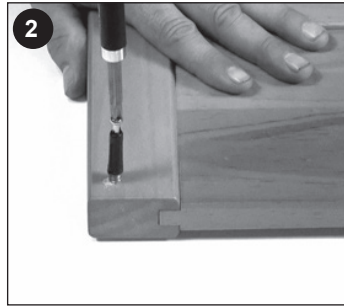
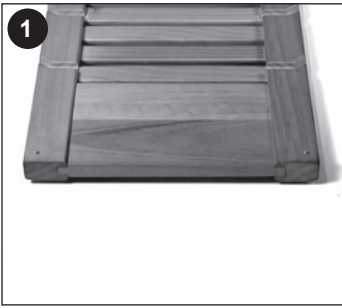
5. Draw a 6 ft. long level line out from wall end at 84 in. location.
6. Draw a 4 ft. long level line out from wall end at 42 in. location.
7. Draw a 22 in. long level line out from wall end at 72 in. location.
8. Locate stud locations at level lines.



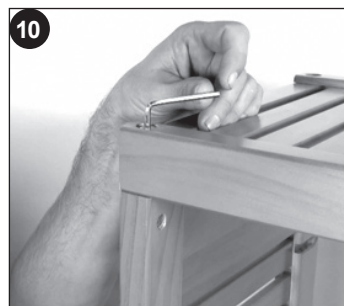
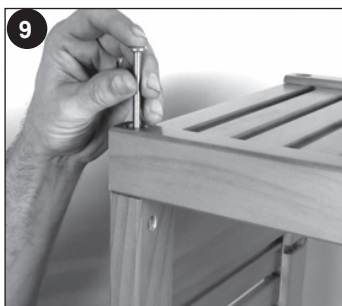
VERIFY SHELF MEASUREMENTS MEASURE - MARK - MEASURE AGAIN

STEP 3: Tower Assembly

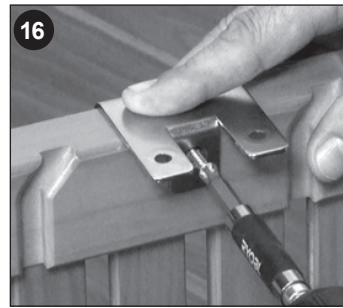
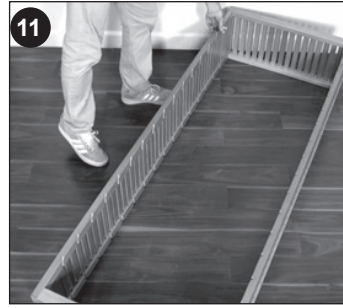
1. Place tower sides down with grooves facing up.
2. Insert cam bolts at tower bottom hole locations (Do not over tighten).
3. Insert tower sides into tower bottom (24in. shelf with nameplate).
4. Insert cam nuts into tower bottom shelf with arrow facing bolt hole.
5. Secure by turning cam nuts clockwise to tighten.
6. Repeat for opposite tower side.



7. Place tower top (26.25 in. shelf) into notches at top of tower.
8. Insert barrel nuts into tower sides with slot in a vertical position.
9. Insert barrel bolts into tower top.
10. Flush tower top with tower side & tighten with allen wrench provided (nut position may need adjustment).

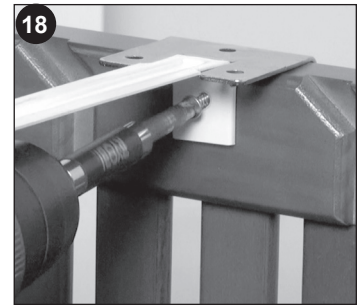


11. Place tower face down (nameplate typically designates tower front).
12. Place top tower bracket between 1st & 2nd groove.
13. Place middle tower bracket between 8th & 9th groove.
14. Place bottom tower bracket between last groove & tower bottom.
15. Repeat for opposite side.
16. Secure top and bottom brackets to tower using #8 3/4 in. screws.



Note: The purpose of the Tower Stabilizer Bar is to hold the tower sides parallel prior to securing against back wall. It is installed in conjunction with the 2 middle tower brackets.

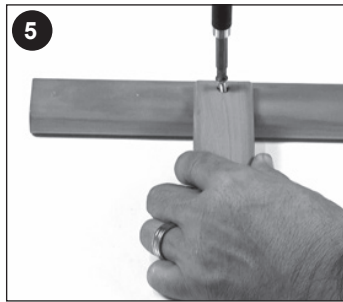
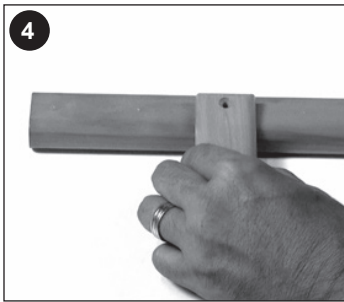
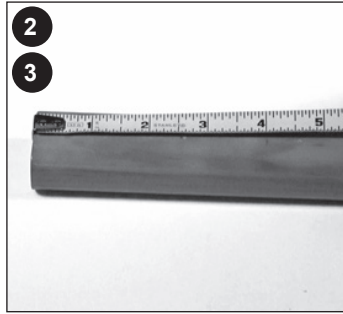
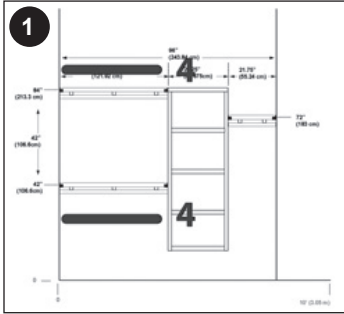
17. Align the Tower Stabilizer Bar with the middle pair of tower brackets.
18. With Tower Stabilizer ends properly nested between the pair of tower brackets, secure using #8 - 1in. screws.
19. The Tower Stabilizer provides proper distance alignment during installation. It can be left in permanently or removed after installation is completed. If removed, replace the #8 - 1in. screws with remaining #8 - 3/4in. screws.



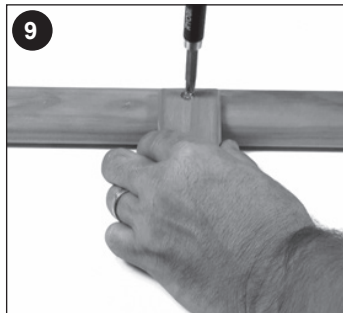
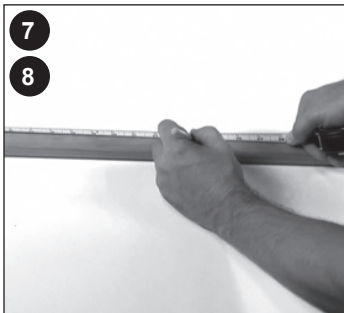
IMPORTANT!
DO NOT use Tower Stabilizer as a means for lifting or positioning the Tower into place!

STEP 4: Attaching Garment Bars

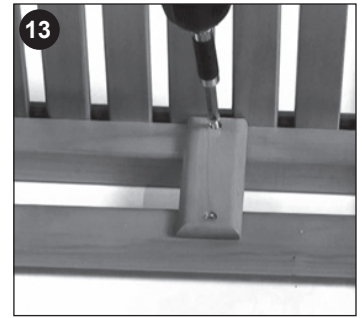
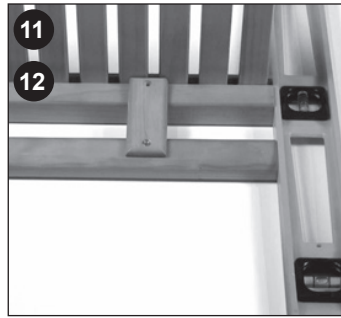
1. 4 ft. garment bars are used for double hang.
2. On the pilot hole side of the bar, measure in 4 in. from the end.
3. Mark location & repeat for other end.
4. Align side of bar spacer with the mark.
5. Secure with #8 1 in. screw.
6. Repeat at each marked location.



7. Find bar center & mark location.
8. Align center of bar spacer at marked location.
9. Secure with #8 1 in. screw.
10. Repeat for 2nd 4 ft. bar.



11. Place notched bar spacer / bar tight on inside rail of shelf.
12. Flush bar & shelf.
13. Secure bar spacer to shelf rail with #8 1 in. screw.
14. Repeat at each bar spacer location.
15. Repeat for each bar & shelf.



STEP 5: Installing Top Shelf & Tower

It is recommended to install hardware into wall studs. Typically 16 in. on center. Use 50 lb. wall anchors provided if no stud is present.

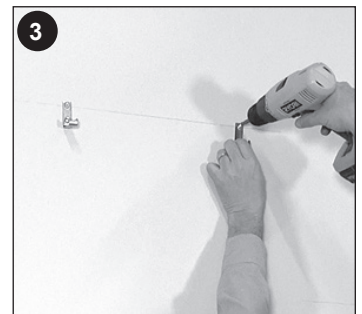
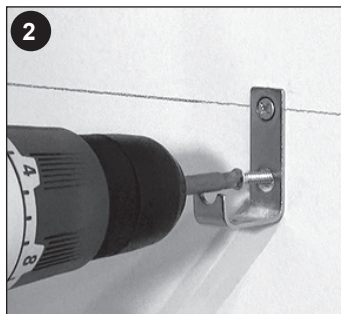
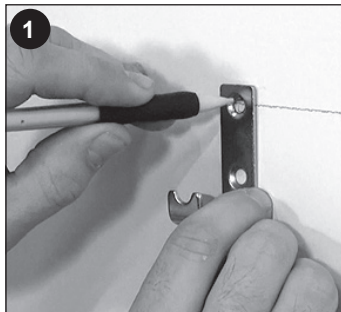
On the top level line space shelf mounting L-clip hardware equidistant in the following manner:

- 3 L-clip hardware within the 48 in. shelf location
- 2 L-clip hardware within the tower top location

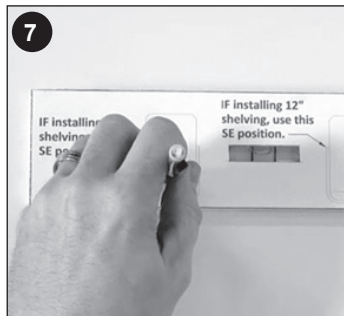
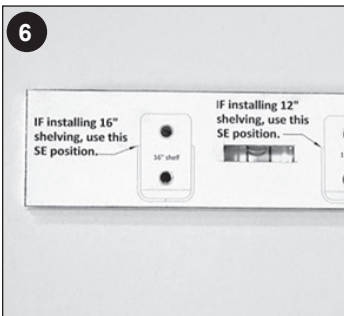
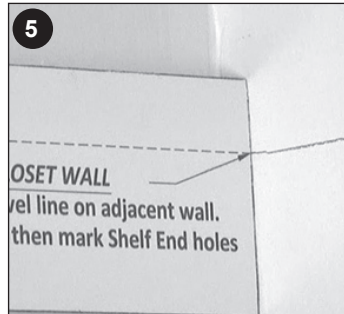
Shelf End hardware provides front support to the shelf by securing it to a side wall or tower and should only be installed on the front ends of the shelf.

NOTE: AT LEAST 1 L-CLIP HARDWARE MUST BE INSTALLED INTO A WALL STUD AT TOWER TOP LOCATION

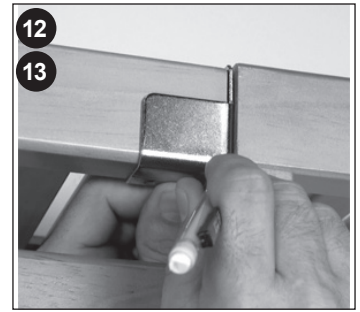
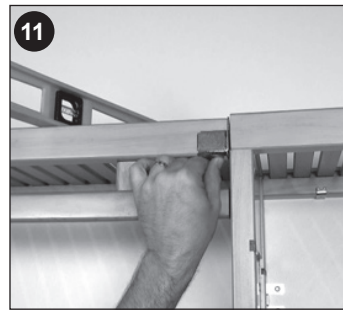
1. Center the top screw hole of the shelf mounting L-clip hardware with the level line & mark all hole locations.
2. Secure L-clip to wall using #8 1 1/2 in. screws at hole locations (Use wall anchors provided if no stud is present).
3. Repeat for remaining L-clip locations.



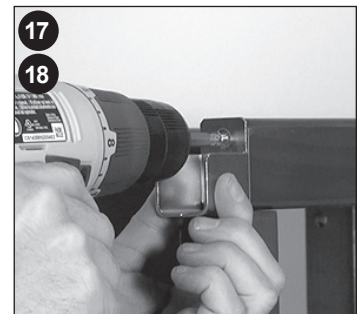
4. Position shelf end template onto side wall.
5. Align template line with adjacent wall line.
6. Level template.
7. Mark required shelf end position for required depth (12in. or 16in. depth).
8. Secure shelf end using #8 - 1 1/2in. screws (use wall anchor if no stud is present).



9. Place shelf onto hardware.
10. Place tower onto hardware.
11. Place a shelf end onto the shelf at tower end.
12. Flush tower with top shelf by moving tower left or right.
13. Level shelf front to back & mark shelf end hardware location on tower.

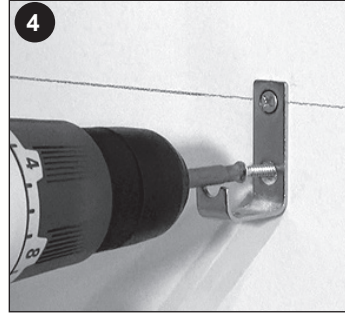
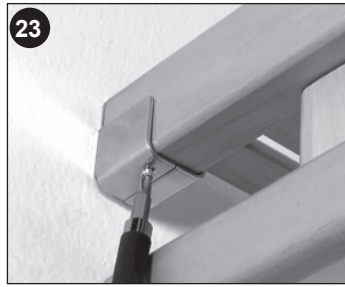
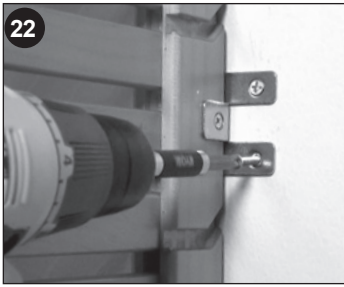


14. Plumb level tower side.
15. Mark tower bracket hole locations on wall.
16. Remove shelf and tower.
17. Align shelf end hardware with the mark on the tower & mark screw hole locations.
18. Secure shelf end to tower top using #8 1/2in. screws at hole location.
NOTE: If shelf is mounted level with the tower top, the shelf end hardware should be "centered" on the end of the front rail of the tower top.

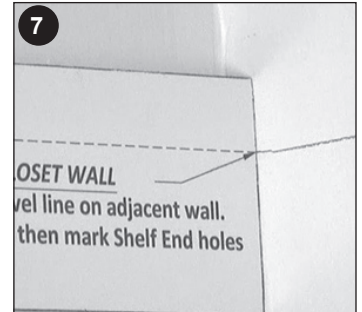


19. Install wall anchors at tower bracket locations if no stud is present.
20. Place tower onto wall and align with hole locations.
21. Place shelf onto wall hardware.
22. Secure tower to wall using #8 1 1/2in. screws at all bracket locations.
23. Secure shelf to hardware using #4 3/4 in. screws at all hardware locations.



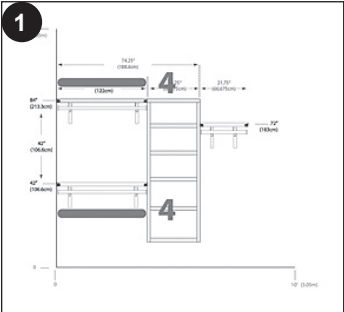


6. Position shelf end template onto side wall.
7. Align template line with adjacent wall line.
8. Level template.
9. Mark required shelf end position for required depth (12in. or 16in. depth).
10. Secure shelf end using #8 - 1 1/2in. screws (use wall anchor if no stud is present).

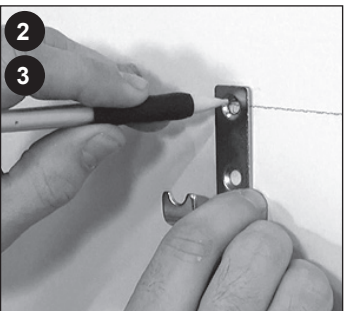
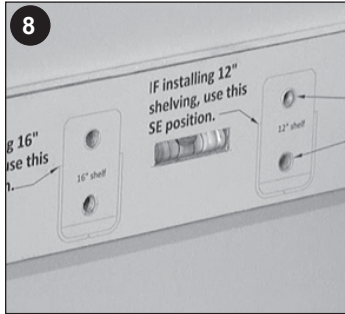


STEP 6: Installing Secondary Shelves

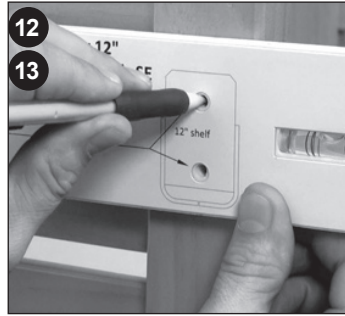
1. Lower hang shelf is created using a 4 ft. shelf at the 42 in. mark.



2. Mark L-clip hardware locations for secondary shelves.
 - It is recommended to install hardware into wall studs. Typically 16 in. on center. Use 50 lb. wall anchors provided if no stud is present.
 - Space L-clip hardware equidistant in the following manner:
 - 3-4 L-clip hardware per 4 ft. shelf span
 - 2 L-clip hardware per 2 ft. shelf span
3. Center the top screw hole of the shelf mounting L-clip hardware with the level line & mark all hole locations.
4. Secure L-clip to wall using #8 1 1/2 in. screws at hole locations (Use wall anchors provided if no stud is present).
5. Repeat for all L-clips at shelf height location.



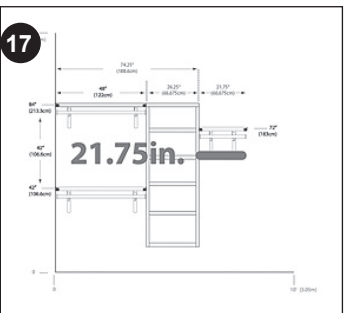
11. Position shelf end template onto tower side and align with adjacent wall line.
12. Level template.
13. Mark required shelf end position for required depth (12in. or 16in. depth).
14. Secure shelf end using #8 - 3/4in. screws.



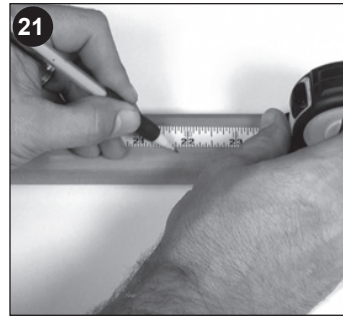
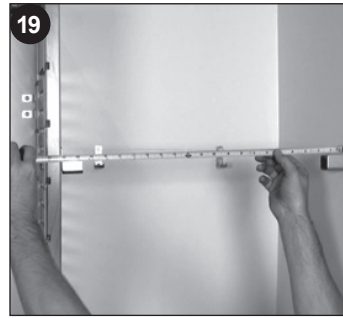
- 15. Place shelf into shelf end hardware & onto L-clip hardware.
- 16. Secure shelf to hardware using #4 3/4 in. screws at all hardware locations.



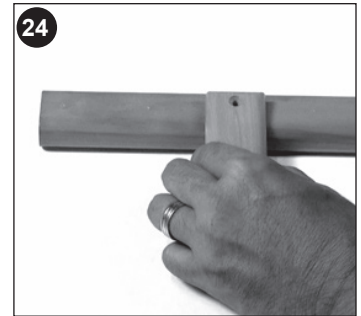
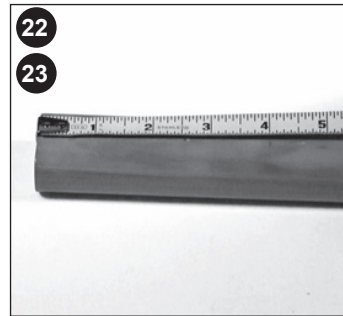
- 17. Long hang shelf is created by cutting a 2 ft. adjustable shelf to 21.75 in. wide and mounted at the 72 in. mark. (If your closet is less than 8 ft. wide you will cut your shelf less that distance.)



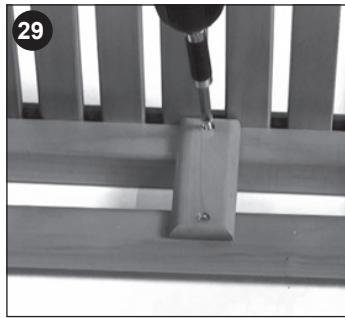
- 18. Repeat hardware mounting steps 2 - 14 for long hang shelf.
- 19. Double check required shelf measurement.
- 20. Cut Adjustable Shelf to required width if needed.
- 21. Cut 2 ft. Garment Bar to required width if needed.



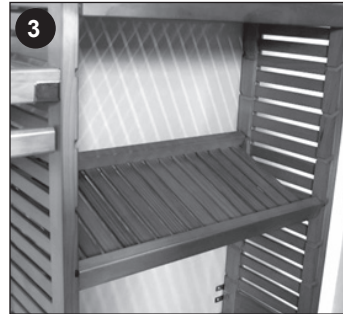
- 22. On the pilot hole side of the bar, measure in 4 in. from the end.
- 23. Mark location & repeat for other end.
- 24. Align side of bar spacer with the mark.
- 25. Secure with #8 1 in. screw.
- 26. Repeat at each marked location.



27. Place notched bar spacer / bar tight on inside rail of shelf.
28. Flush bar & shelf.
29. Secure bar spacer to shelf rail with #8 1 in. screw.
30. Repeat at each bar spacer location.



3. Create a shoe shelf by inserting the shelf upside down with the back one groove higher than the front.



Creating Adjustable Shelves

31. Place shelf into shelf end hardware & onto L-clip hardware.
32. Secure shelf to hardware using #4 3/4 in. screws at all hardware locations.



Put your excess cuts back into your closet. Any material greater than 24 in. wide can be used as an additional shelf.

Cut excess lengths to 24 in. wide to use as adjustable tower shelves & place wherever you choose.

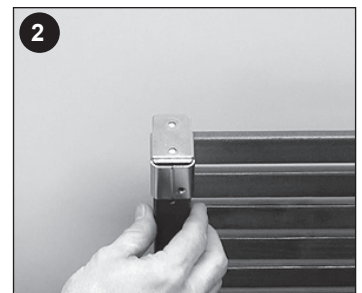
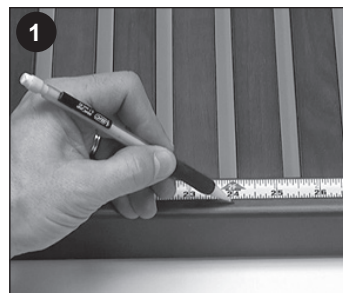
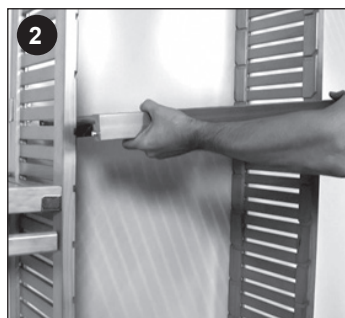
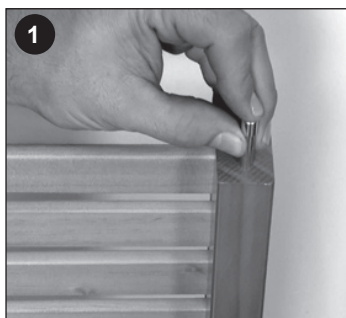
In an 8 ft. closet configuration your 4 ft. of excess shelving can create 2 additional adjustable shelves.



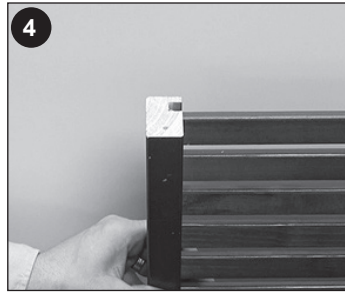
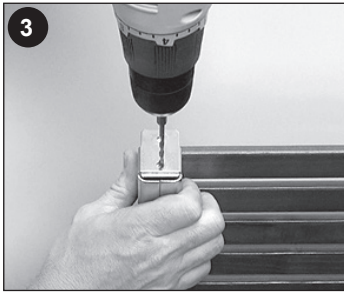
1. Measure required dimension, mark & cut shelf (if necessary).
2. Place shelf end bracket onto shelf.

STEP 7: Installing Adjustable Shelves

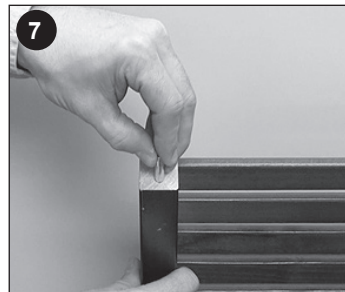
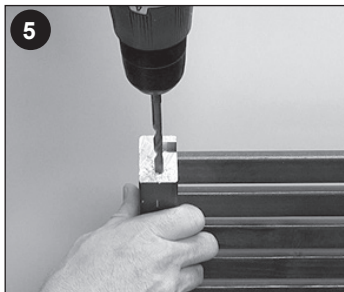
1. Select 24 in. adjustable shelf & insert shelf pins into shelf ends.
2. Place the shelf into the tower at the desired location by inserting the pins into the tower grooves.



- Using the lower hole location on the bracket, drill a pilot hole using a 1/8 in. drill bit.
- Remove the shelf end bracket.

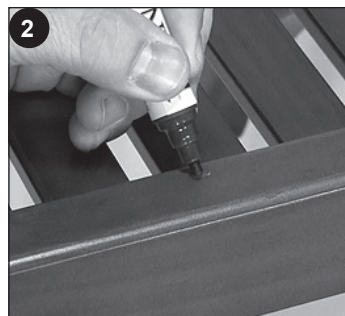


- Re-drill hole 1 - 1 1/4 in. deep using a 1/4 in. drill bit.
- Repeat steps for each shelf end.
- Insert shelf pin into holes at each end.



STEP 9: Final Touches

- Insert mushroom caps into barrel nut holes on tower sides.
- Touch up scratches & cut ends with stain pen provided.

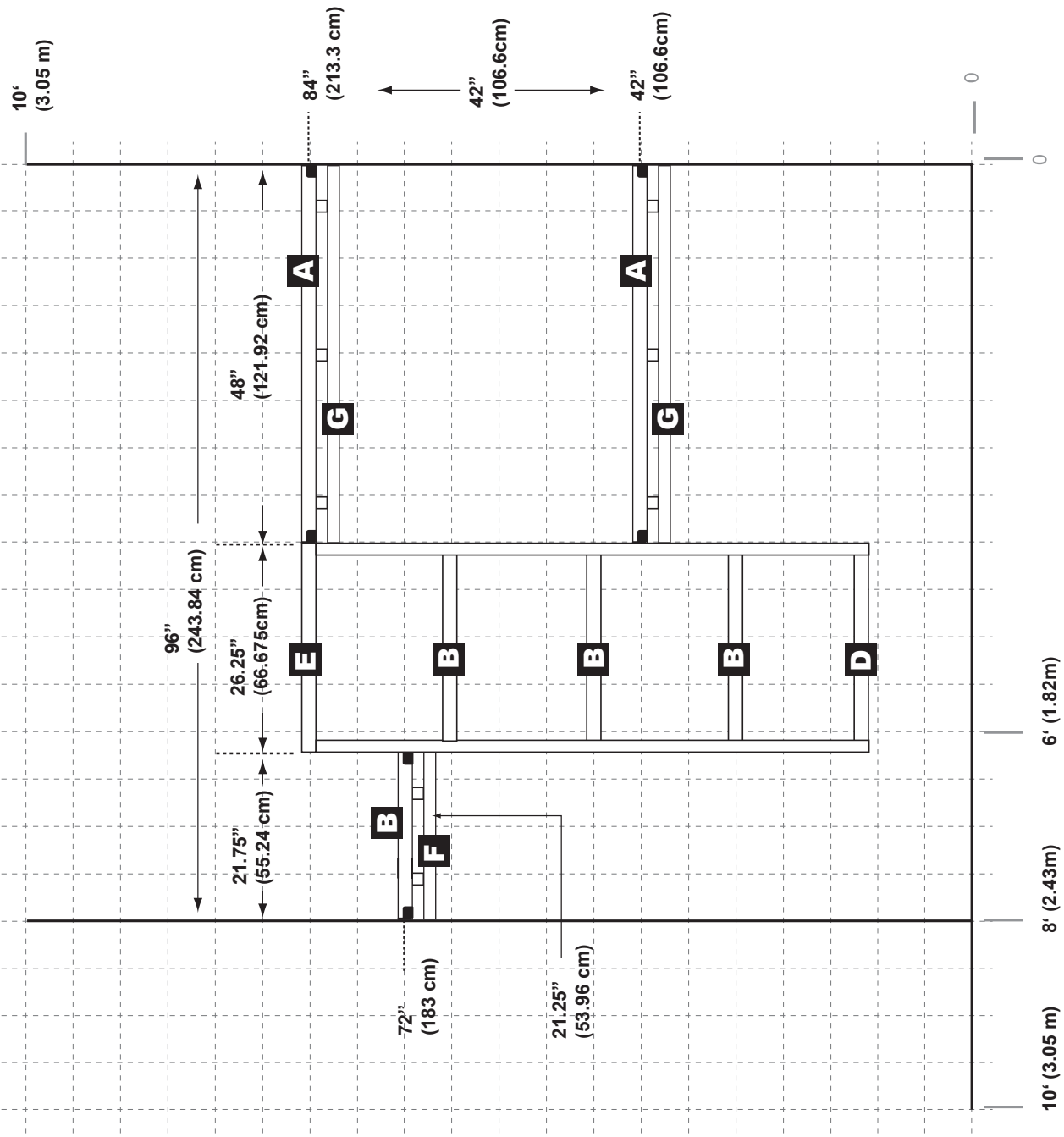


JOHN LOUIS HOME

Solid Wood Home Storage Solutions

For additional product information including step-by-step Installation Videos, Frequently Asked Questions, Storage Tips and more, please visit: johnlouishome.com/resources

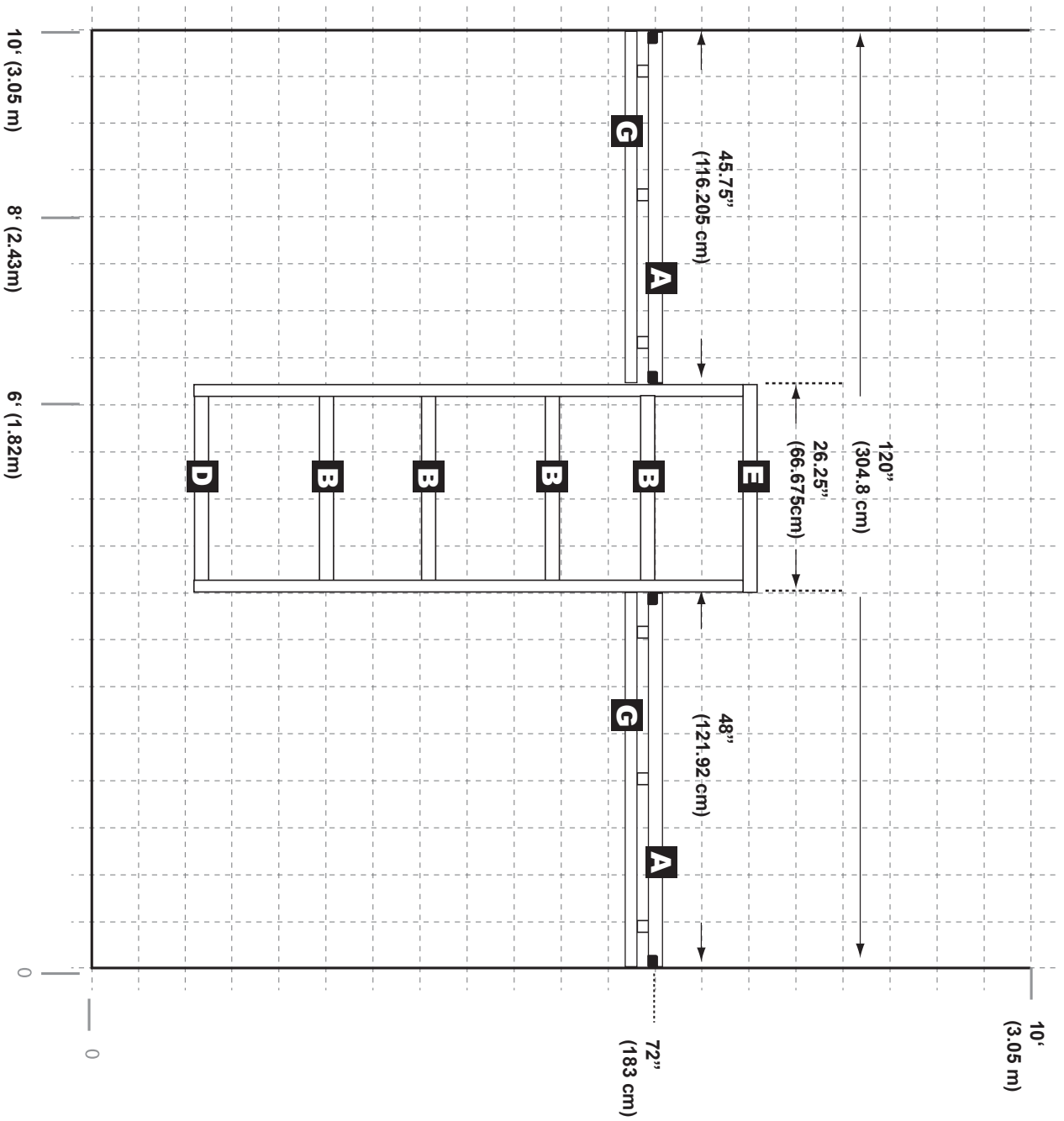
- CONFIGURATION NOTES:**
- Requires cutting of B shelf.
 - Design can be reversed.
 - 72" Long hang shelf can be placed at any height.



8' CLOSET CONFIGURATION A • A CONFIGURACION DE 2.43M • A CONFIGURATION DE 2.43M 6" = (15.2cm)

CONFIGURATION NOTES:

- Requires cutting of A shelf.
- A shelves may be placed at any height
- Requires drilling of B shelf for use as adjustable shelf.
- Design can be reversed..

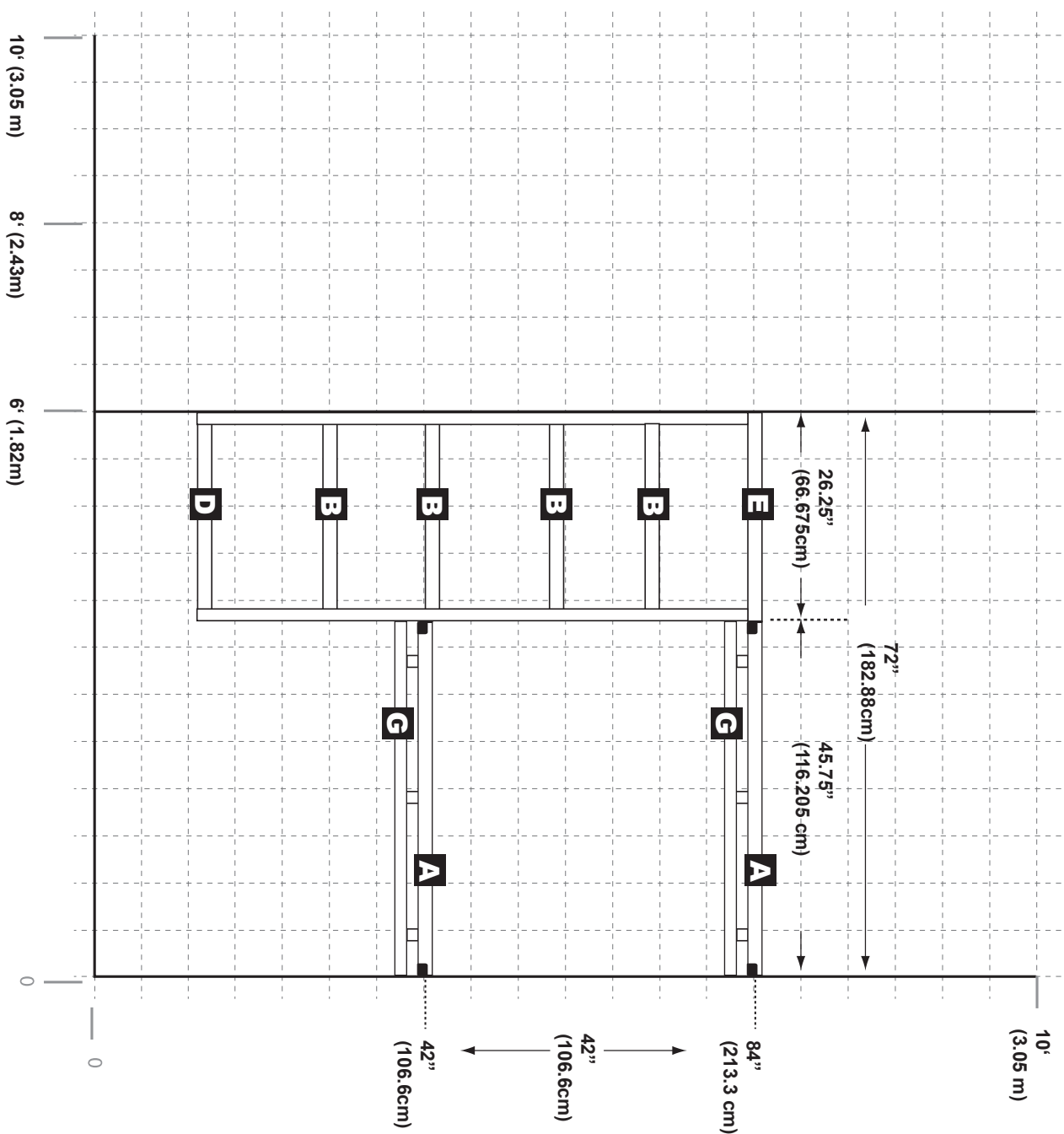


10' CLOSET CONFIGURATION B • B CONFIGURACION DE 3.05M • B CONFIGURATION DE 3.05M

6" = (15.2cm)

CONFIGURATION NOTES:

- Requires cutting of A shelf.
- Requires drilling of B shelf for use as adjustable shelf.
- Design can be reversed.



6' CLOSET CONFIGURATION C • C CONFIGURACION DE 1.82M • C CONFIGURATION DE 1.82M

6" = 15.2cm